

5 combined tally counter with automatic recording function

DK-5005C[⌚]

At a preset interval

(1 minute to 99 hours 59 minutes)

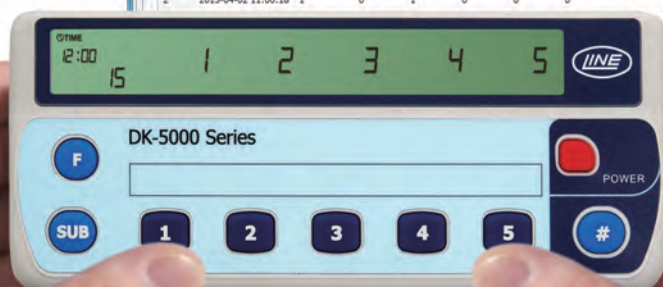
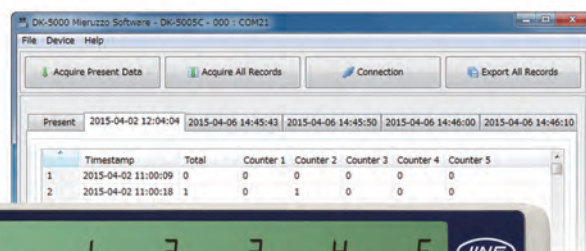
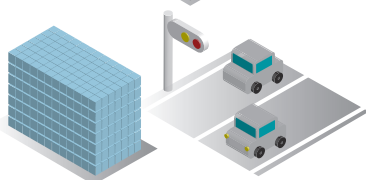
Count Values are recorded automatically

The individual count values and the total count are recorded automatically at a preset interval with a corresponding timestamp.

Whether the count values are reset to "0" or not after saving a data log is selectable.

Useful at
production sites

Useful at
various
statistical surveys



DK-5000 Mieruzzo Software

Setting : Log Interval = "1 hour",
Logging Type = "Continuous"

Present				
2015-04-02 00:00:00				
2015-04-03 00:00:00				
2015-04-04 00:00:00				
Timestamp	Total	Counter1	Counter2	Counter3
1 2015-04-01 08:00:00	0	0	0	0
2 2015-04-01 09:00:00	15	5	5	0
3 2015-04-01 10:00:00	25	8	10	0
4 2015-04-01 11:00:00	55	13	25	3
5 2015-04-01 12:00:00	80	18	35	12
6 2015-04-01 13:00:00	103	35	40	15
7 2015-04-01 14:00:00	115	38	43	15
8 2015-04-01 15:00:00	160	45	55	25
9 2015-04-01 16:00:00	205	50	62	30
10 2015-04-01 17:00:00	255	60	72	50
11 2015-04-01 18:00:00	350	102	82	70
12 2015-04-01 19:00:00	375	107	84	71
13 2015-04-01 20:00:00	380	107	86	72
14 2015-04-01 21:00:00	395	110	89	75
15 2015-04-01 22:00:00	420	113	95	75
16 2015-04-01 23:00:00	445	120	102	78
17 2015-04-02 00:00:00	478	128	110	80

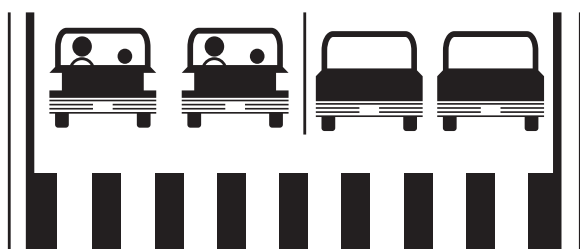
Start Time : 2015-04-01 08:00:00
End Time : 2015-04-02 00:00:00
Number of Logs : 17

Export Record



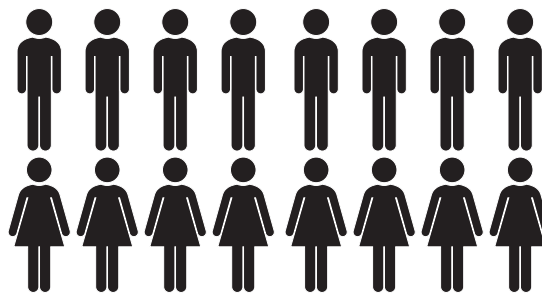
Applications

[Traffic Survey]



The buttons are assigned to each type of vehicle for counting passing vehicles.
The count values are recorded automatically at a preset interval.

[At various events, shops, facilities and etc.]



The number of visitors are counted per each age and gender.
The count values are recorded automatically at a preset interval.

Unique features of DK-5005C

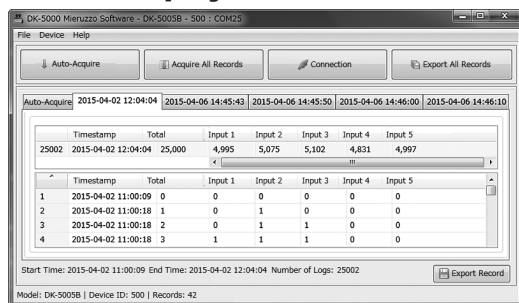
1. The individual count values and the total count are recorded automatically at a preset interval with a corresponding timestamp.
2. Date & Time is recorded when count values are recorded in its memory so that you can review them as time series data later.
3. It is easy to accumulate and edit with spreadsheet software in the case the count values are saved on the computer.

Software Windows computer is required to view record details.

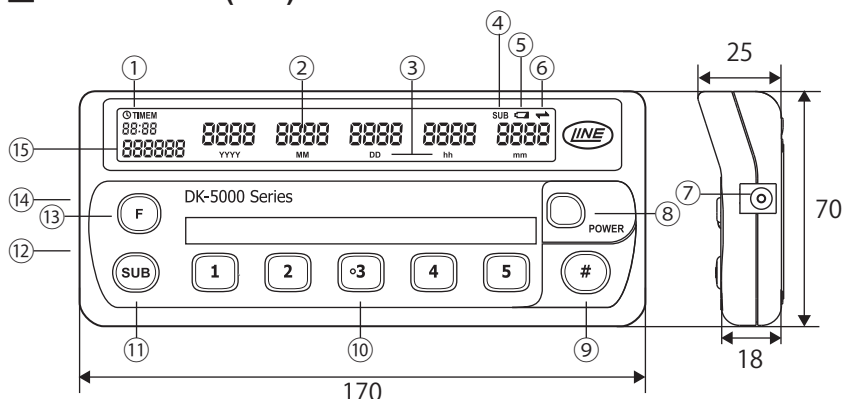
The companion software enables the user to use the following functions when the device is connected to the computer with a general-purpose USB cable.

- Real-time display of count values displayed on the device
- Download the data from the device
- Export the downloaded data to a .XLS or .CSV file

Display of software



Dimensions (mm)



- | | |
|--------------------------|-----------------------|
| ① Clock / Memory Display | ⑨ [#] Key |
| ② Count Display | ⑩ Count Key |
| ③ Date/Time Icon | ⑪ Subtract Key |
| ④ Subtract Icon | ⑫ Strap Hole |
| ⑤ Low Battery Icon | ⑬ Function Key |
| ⑥ Software Link Icon | ⑭ USB 2.0 Port |
| ⑦ 5.5 mm DC Jack | ⑮ Total Count Display |
| ⑧ Power Key | |

Specifications

Input Type	Rubber Key
Display Type	7-Segment LCD Display Counter (x5) : 7mm(H), Total Count : 5mm(H) Record Number / Time Display : 3.5mm(H)
Count Display	Internal : 0 - 99999(Display : 0 - 9999)
Total Count Display	0 - 999999
Clock Function	Year / Month / Day / Hour(24hour) / Minute / Second
Memory	Maximum number of log recorded automatically: 48,000 logs (Built-in flash memory)
Data Communication	USB micro-B (USB 2.0)
Power Source	AAA Battery x 4 pcs. USB Cable AC/DC Adapter
Battery Life	200 hour min. *
Operating Temperature	0°C - +50°C (non-freezing)
Storage Temperature	-10°C - +60°C (non-freezing)
Weight	Approx. 130g (battery & accessories not included)

* (under normal operating temperature using Alkaline type battery)

Accessories

Instruction Manual

* Batteries are not included.

Please prepare AAA batteries by yourself.

Data Communication Software

Downloadable from

<http://www.lineiseiki.com>

Options

USB-02 (USB Cable)

* A general-purpose micro B-to-A USB cable can be used.

AC/DC ADAPTER (DK-5)

* Please use Line Seiki AC/DC Power Adapter.

This catalog was last revised July 17, 2015.
Contents are subject to change even without prior notice.
All Rights Reserved, Copyright © 2015, LINE SEIKI CO., LTD.



LINE SEIKI CO., LTD.

Head Office 37-7 Chuo-cho, 2-Chome Meguro-ku,
Tokyo JAPAN 152-0001

Contact
E-mail
URL

TEL:03-3716-5151
webtrade@line.co.jp
<http://www.lineiseiki.com>

FAX:03-3710-4552