

DSP SERIES

MECHANICAL PRESET COUNTER



- REVOLUTION OR DIRECT DRIVE TYPE
- LARGE DIGIT DISPLAY (5 DIGITS)
- 2 PRESET LEVELS
- BUILT-IN MICROSWITCH
- EASY PRESETTING
- RESET BY LEVER STROKE

MODEL SELECTION

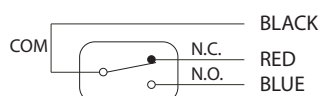
TYPE	DIGITS					
		TYPE I Shaft on right Top Going	TYPE II Shaft on right Top Coming	TYPE III Shaft on left Top Going	TYPE IV Shaft on left Top Coming	TYPE A Shaft at base Anti-clockwise
REVOLUTION (1 count / rev)	5	DSP - 15 (I)	DSP - 15 (II)	DSPL - 15 (III)	DSPL - 15 (IV)	DSP - 15A
DIRECT DRIVE (10 counts / rev)		DSP - 25 (I)	DSP - 25 (II)	DSPL - 25 (III)	DSPL - 25 (IV)	—————

SPECIFICATIONS

Display	6.0 × 3.5mm (White on Black Background)
Preset Range	1 ~ 99999
Input/Count Method	Shaft rotation
Torque	Revolution : 50mN•m max. Direct Drive : 130mN•m max.
Count Speed	Revolution : 3000 rpm max. Direct Drive : 300 rpm max.
Output	Microswitch - Type 1C (AC250V 10A max.) × 2
Reset	Lever
Operating Temperature	-5°C ~ +40°C (Non-Freezing)
Operating Humidity	85%RH Maximum (Non-Condensing)

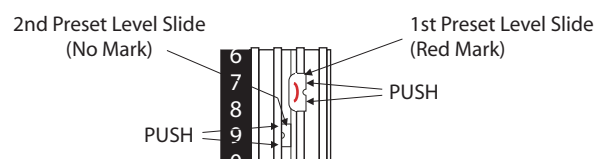
WIRING

This counter has 2 built-in Microswitch. The leadwires of these can be seen at the back side of the counter. Looking from the back side of the counter, the set of leadwires on the Left is for the 1st Preset Level (Red Marked slide) and the one on the Right is for the 2nd Preset Level (Non Marked slide). The below diagram shows the corresponding microswitch connection with respect to the leadwire colors.



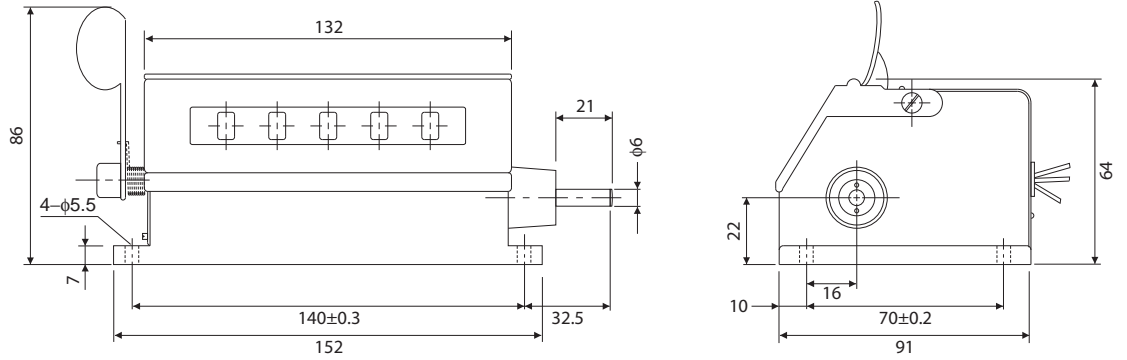
SETTING THE PRESET VALUE

1. Lift the cover of the counter.
2. While slightly pushing the reset lever, lift the plastic hook on the left most inside of the counter so that it will prevent the reset lever to return fully.
3. To set the 1st Preset Level, use the included plastic lever and insert the flat tip on the edge of the 1st Preset Level Slide as indicated below.
4. While the plastic lever is inserted, move the slide by sliding it up or down until the desired value of that particular digit is reached.
Do the same for the rest of the digits.
5. After the desired number is set, pull out the plastic lever so that the slide will lock into the digit wheels.
6. Do the same to set the value of the 2nd Preset Level.

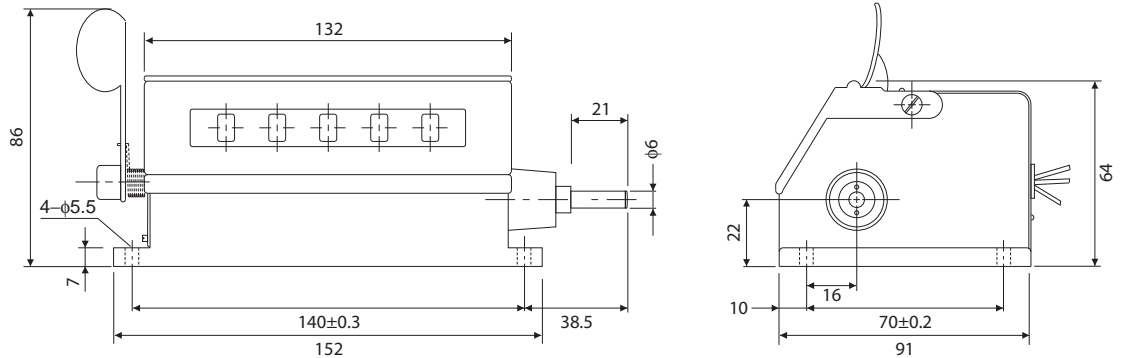


DIMENSIONS

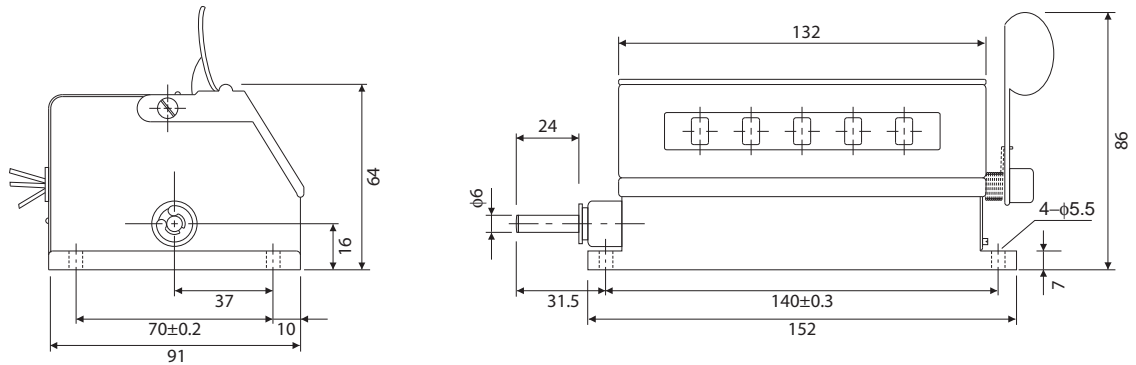
DSP-15 (I)
DSP-15 (II)



DSP-25 (I)
DSP-25 (II)



DSPL-15 (III)
DSPL-15 (IV)
DSPL-25 (III)
DSPL-25 (IV)



DSP-15A

