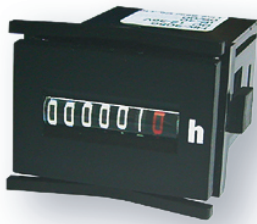


ELECTRIC HOUR METER HK-30/46/47 SERIES

**RELIABLE HIGH QUALITY HOUR METER WITH CE MARKING
IDEAL FOR MONITORING AND MAINTENANCE OF MACHINES
FRONT PANEL PROTECTION IP65
RoHS COMPLIANT**



HK-30 series



HK-46 series



HK-47 series

PANEL SIZE 36X24
COMPACT SIZE HOUR METER

DIN 48X48
COMPACT SIZE HOUR METER

FRONT DIMENSION ϕ 58

DIN 48X24 IS AVAILABLE WITH
SPECIAL FRONT PANEL

DIN RAIL MOUNT IS AVAILABLE
WITH SPECIAL ADAPTER

ALUMINIUM CLAMP MOUNTING

TYPES

TYPE	MODEL No.	SUPPLY VOLTAGE	FREQUENCY
HK-30	HK-3001	AC 110 to 120V	50Hz
	HK-3011		60Hz
	HK-3021	220 to 240V	50Hz
	HK-3031		60Hz
	HK-3041	DC 6 to 12V	-
	HK-3051		12 to 36V
HK-46	HK-4601	AC 110 to 120V	50Hz
	HK-4611		60Hz
	HK-4621	220 to 240V	50Hz
	HK-4631		60Hz
	HK-4661	DC 6 to 30V	-
HK-47	HK-4761	DC 6 to 30V	-

APPLICATIONS

● Applications for AC type

- Industrial machines
- Control Panels
- Compressors
- Generators
- Pumps
- Air Conditioning

● Applications for DC type

- Agricultural equipments
- Construction equipments

ACCESSORIES

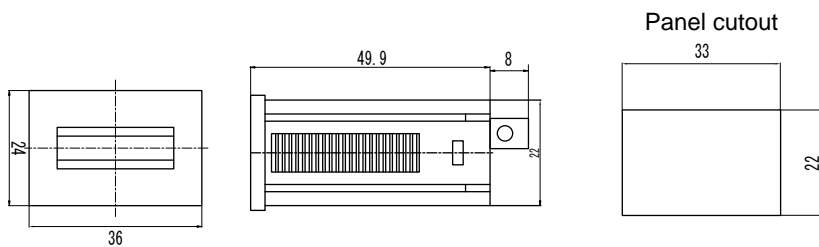
MODEL No.	
HK-46A	DIN rail adapter for HK-46 series
HK-30P	DIN 48 X24 panel for HK-30 series

SPECIFICATIONS

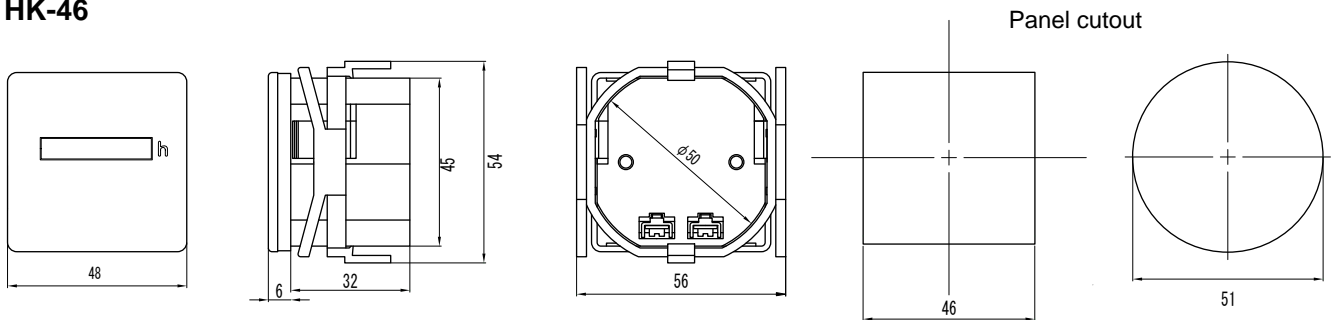
Model	AC version		DC version		
	HK-30	HK-46	HK-30	HK-46	HK-47
Voltage	-10% / +10%				
No. of digits	5 integers 2 decimals		6 integers 1 decimals		
Reading accuracy	1 /100 hour (36 sec.)		1 /10 hour (6 min.)		
Counting range	99999.99 hours		999999.9 hours		
Size of digit	4 mm				
Color of digit	integers: white on black		decimals : red on black		
Motor	Synchronous motor		Step motor		
Protection class	IP65 front side				
Mounting	Fork clamp				
Connection	Flat pins (6.3 X 0.8 mm) with screw terminals				
Operating Temperature	-25 to +70°C	-25 to 80°C	-10 to 55°C	-20 to +70°C	-20 to +70°C

OUTER DIMENSION

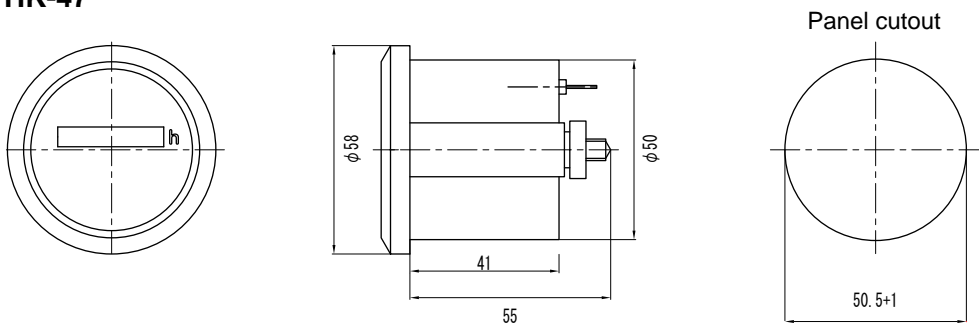
HK-30



HK-46



HK-47



Authorized Distributor :

LINE SEIKI CO., LTD.

37-7 , CHUO-CHO 2CHOME, MEGURO-KU,
TOKYO, 152-0001

Tel.: +81-3-3716-5151 Fax.: +81-3-3710-4552

E-mail: webtrade@line.co.jp

URL: <http://www.lineseiki.com>

This catalog was last revised May 23, 2006.

*Subject to change without prior notice.

All Rights Reserved, Copyright © 2006, LINE SEIKI CO., LTD.