

SP SERIES

PRESET LENGTH MEASURING COUNTER



DESCRIPTION

The SP Series is a robust built length measuring preset counter. A built in microswitch is actuated when the preset value is reached and can be connected to an output device, such as buzzer, light post or stop switch of a machine. This meter can be used with various length measuring applications for various materials such as textiles, steel sheetc, etc.

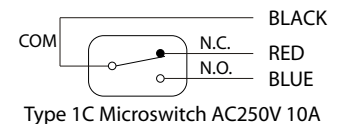
MODELS

Models	Digits	Rotation Direction	Resolution	Count Speed (max.)	Torque	Display	Weight
SP 3:1-4 (I)	4	Clockwise	1 m	500 meter (yard)/min	200 gcm	White on Black Wheel Digit Size: 6x3.5mm	1400g
SP 3:1-4 (II)		Anti-Clockwise					
SP 3:10-4 (I)		Clockwise	0.1 m	50 meter (yard)/min	250 gcm		
SP 3:10-4 (II)		Anti-Clockwise					
SP 3:1-5 (I)	5	Clockwise	1 m	500 meter (yard)/min	200 gcm	White on Black Wheel Digit Size: 5.5x2.6mm	
SP 3:1-5 (II)		Anti-Clockwise					
SP 3:10-5 (I)		Clockwise	0.1 m	50 meter (yard)/min	250 gcm		
SP 3:10-5 (II)		Anti-Clockwise					

Operating Temperature	-5°C~+40°C	Operating Humidity	85%RH maximum	Remarks	Non-Freezing, Non-Condensing
-----------------------	------------	--------------------	---------------	---------	------------------------------

WIRING

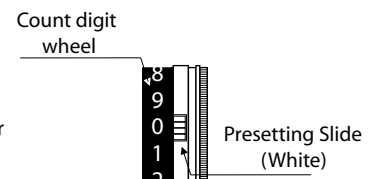
This counter has a built-in Microswitch. The leadwires of these can be seen at the back side of the counter. The diagram on the right shows the corresponding microswitch connection with respect to the leadwire colors.



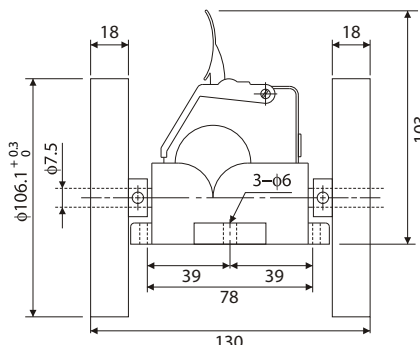
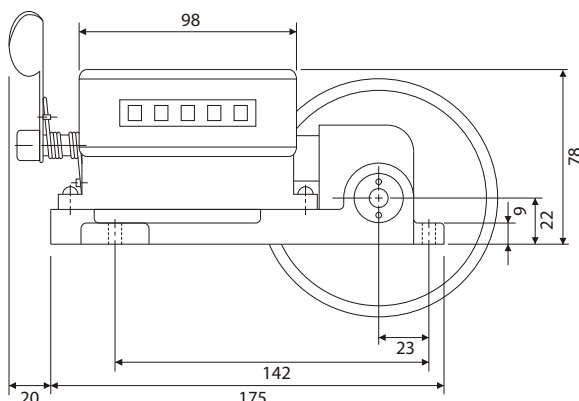
Type 1C Microswitch AC250V 10A

SETTING THE PRESET VALUE

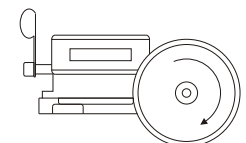
- Lift the cover of the counter.
- While slightly pushing the reset lever, lift the plastic hook on the left most inside of the counter so that it will prevent the reset lever to return fully.
- To set the preset value, use the included plastic lever to push the white presetting slide of the particular digit to be set.
- While the white presetting slide is pushed, move the count digit wheel until the desired value for that particular digit is aligned with the white setting slide. Release the plastic lever from the white setting slide. Do the same for the rest of the digits.
- Make sure that after the release of the plastic lever, the white setting slide is fully locked to the set digit.



DIMENSIONS



TYPE (I) - CLOCKWISE



TYPE (II) - ANTI-CLOCKWISE

